

**INSTRUMENT
APPROACH
CHART**

AERODROME ELEV 29 ft
HIGHEST ELEV TDZ 20 ft

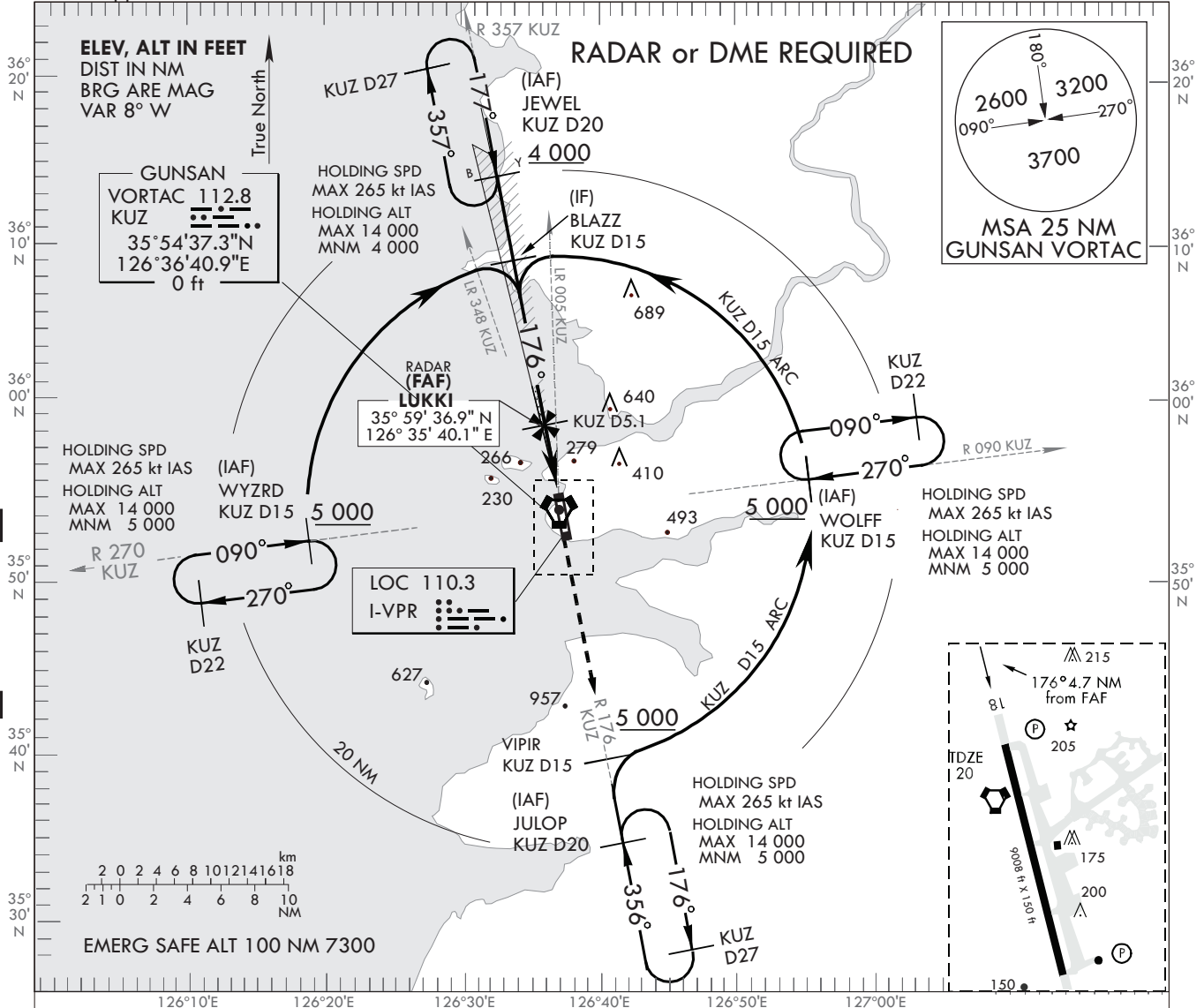
APP 124.1 292.65
TWR 126.5 292.3

GUNSAN (RKJK)
ILS or LOC/DME
RWY 18

Note : Approach and circle-to-land under U.S. TERPS.

126°40'E

127°00'E



ELEV, ALT IN FEET
DIST IN NM
BRG ARE MAG
VAR 8° W

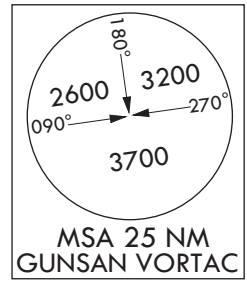
GUNSAN
VORTAC 112.8
KUZ
35°54'37.3"N
126°36'40.9"E
0 ft

HOLDING SPD
MAX 265 kt IAS
HOLDING ALT
MAX 14 000
MNM 4 000

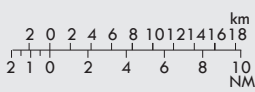
RADAR (FAF)
LUKKI
35°59'36.9"N
126°35'40.1"E

HOLDING SPD
MAX 265 kt IAS
HOLDING ALT
MAX 14 000
MNM 5 000

LOC 110.3
I-VPR



MSA 25 NM
GUNSAN VORTAC



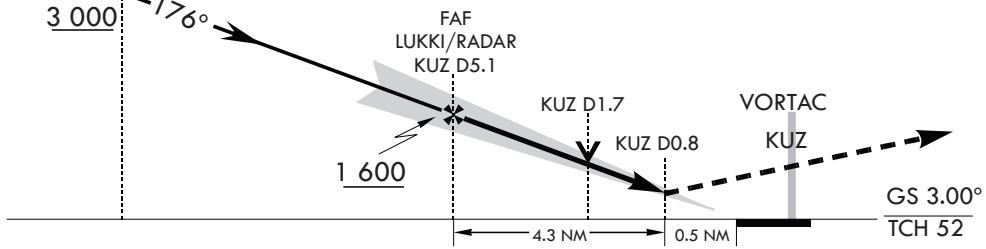
EMERG SAFE ALT 100 NM 7300

IF
BLAZZ
RDL 177 KUZ/D15
3 000

TRANSITION ALT 14 000
TRANSITION LVL FL140

MISSED APPROACH

Intercept the RDL 176 to JULOP and hold at 5 000 ft.
Continue Climb-in-Holding to 5 000 ft.



CATEGORY	A	B	C	D
S-ILS 18 *	218 / 24		200	(200-1/2)
S-LOC 18 **	500 / 24 482 (500 - 1/2)		500 / 50 482 (500 - 1)	
CIRCLING	640 - 1 611 (700 - 1)	680 - 1 651 (700 - 1)	680 - 1 3/4 651 (700 - 1 3/4)	700 - 2 1/4 731 (800 - 2 1/4)

* When ALS INOP, Increase RVR to 40, VIS to 3/4 mile.
** When ALS INOP, Increase CAT AB RVR to 55, VIS to 1 mile, CAT CD VIS to 1 3/8 mile.

Change : Information of OBST HGT.

GUNSAN (RKJK)
 ILS or LOC/DME
 RWY 18

AERONAUTICAL DATA TABULATION

ILS or LOC/DME approach to RWY 18 from JEWEL, WOLFF, JULOP, WYZRD	
Fix/point	Coordinates
JULOP (IAF)	35°34'59.5"N 126°41'34.0"E
VIPIR	35°39'54.0"N 126°40'20.9"E
WOLFF (IAF)	35°56'25.7"N 126°55'01.0"E
WYZRD (IAF)	35°52'46.1"N 126°18'21.7"E
JEWEL (IAF)	36°14'19.1"N 126°32'12.6"E
BLAZZ (IF)	36°09'23.7"N 126°33'19.9"E
LUKKI (FAF)	35°59'36.9"N 126°35'40.1"E
1.7D KUZ	-
0.8D KUZ	-
THR RWY 18	35°54'57.21"N 126°36'46.83"E

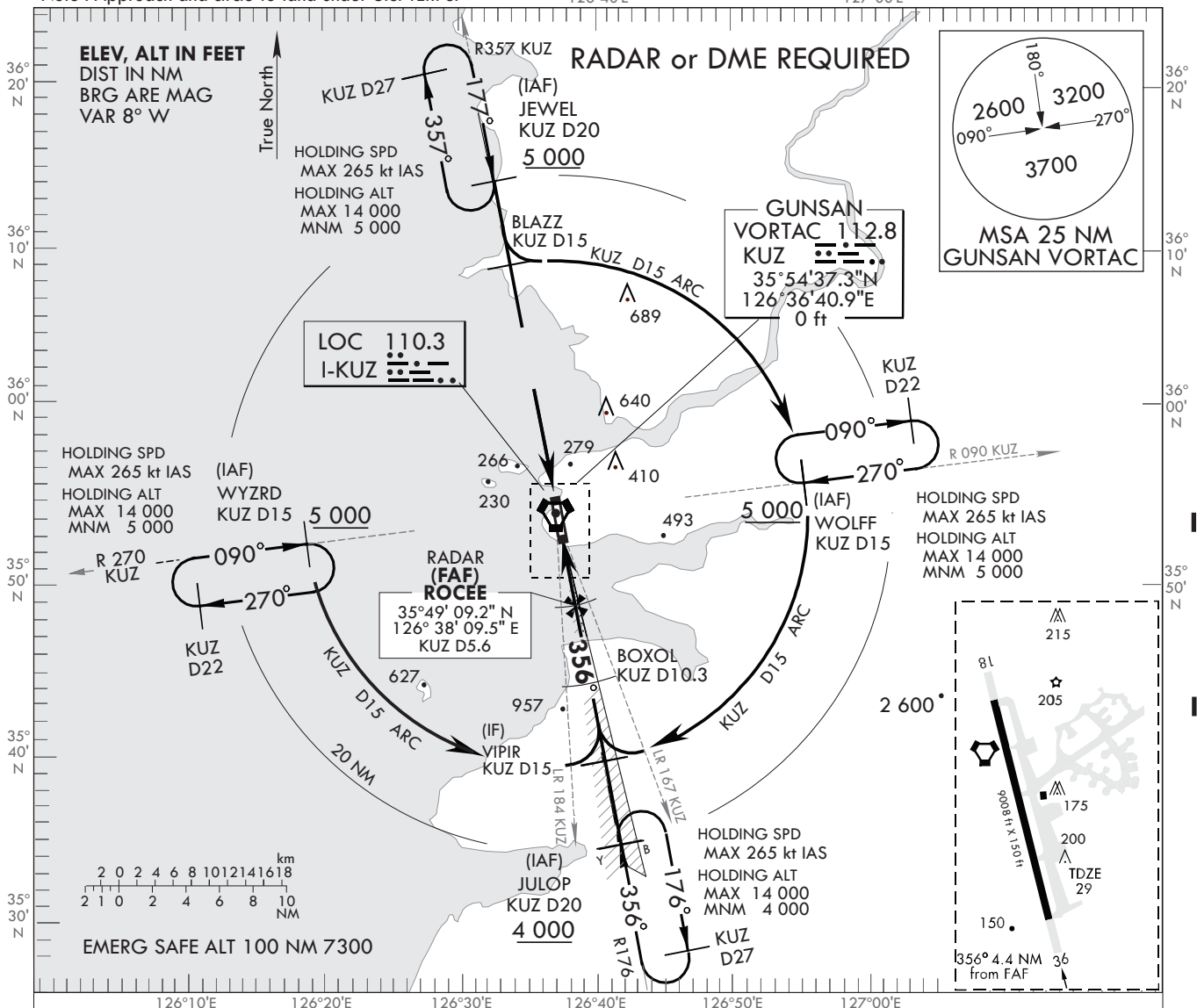
INSTRUMENT
APPROACH
CHART

AERODROME ELEV 29 FT
HIGHEST ELEV TDZ 29 FT

APP 124.1 292.65
 TWR 126.5 292.3

GUNSAN (RKJK)
ILS or LOC/DME
RWY 36

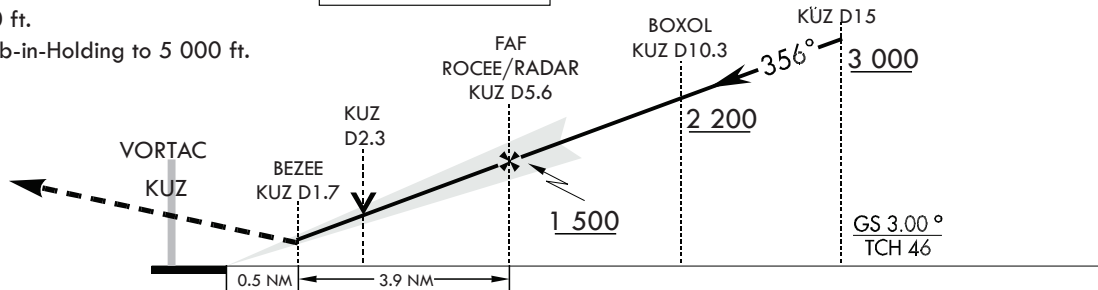
Note : Approach and circle-to-land under U.S. TERPS.



MISSED APPROACH

Intercept the RDL 357 KUZ to JEWEL and hold at 5 000 ft.
 Continue Climb-in-Holding to 5 000 ft.

TRANSITION ALT 14 000
 TRANSITION LVL FL140



CATEGORY	A	B	C	D
S-ILS 36 *	229 / 24		200	(200-1/2)
S-LOC 36 **	440 / 24 411	(500 - 1/2)	411	440 / 40 (500 - 3/4)
CIRCLING	640 - 1 611 (700 - 1)	680 - 1 651 (700 - 1)	680 - 1 3/4 651 (700 - 1 3/4)	760 - 2 1/4 731 (800 - 2 1/4)

* When ALS INOP, Increase RVR to 40 VIS to 3/4 mile.

** When ALS INOP, Increase CAT AB RVR to 55 VIS to 1 mile, CAT CD RVR to 60 VIS to 1 1/8 miles.

Change : Information of OBST HGT.

GUNSAN (RKJK)

ILS or LOC/DME
 RWY 36

AERONAUTICAL DATA TABULATION

ILS or LOC/DME approach to RWY 36 from JEWEL, WOLFF, JULOP, WYZRD	
Fix/point	Coordinates
JEWEL (IAF)	36°14'19.1"N 126°32'12.6"E
BLAZZ	36°09'23.7"N 126°33'19.9"E
WOLFF (IAF)	35°56'25.7"N 126°55'01.0"E
WYZRD (IAF)	35°52'46.1"N 126°18'21.7"E
JULOP (IAF)	35°34'59.5"N 126°41'34.0"E
VIPIR (IF)	35°39'54.0"N 126°40'20.9"E
BOXOL	35°44'31.3"N 126°39'15.3"E
ROCEE (FAF)	35°49'09.2"N 126°38'09.5"E
2.1D KUZ	-
BEZEE	35°52'59.0"N 126°37'14.9"E
THR RWY 36	35°53'29.83"N 126°37'07.61"E

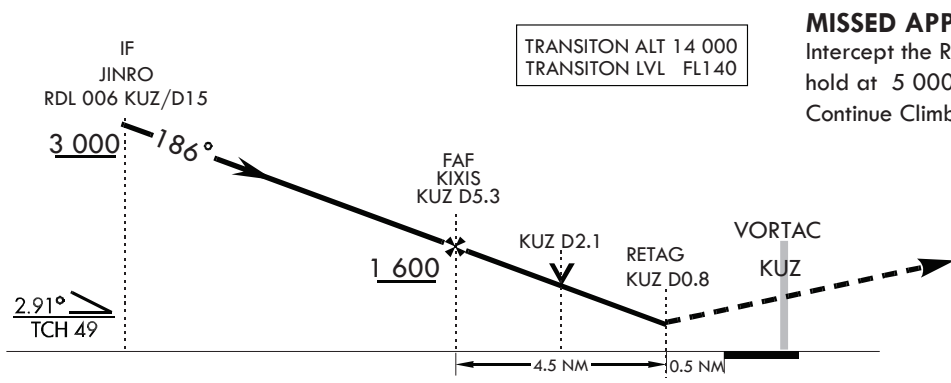
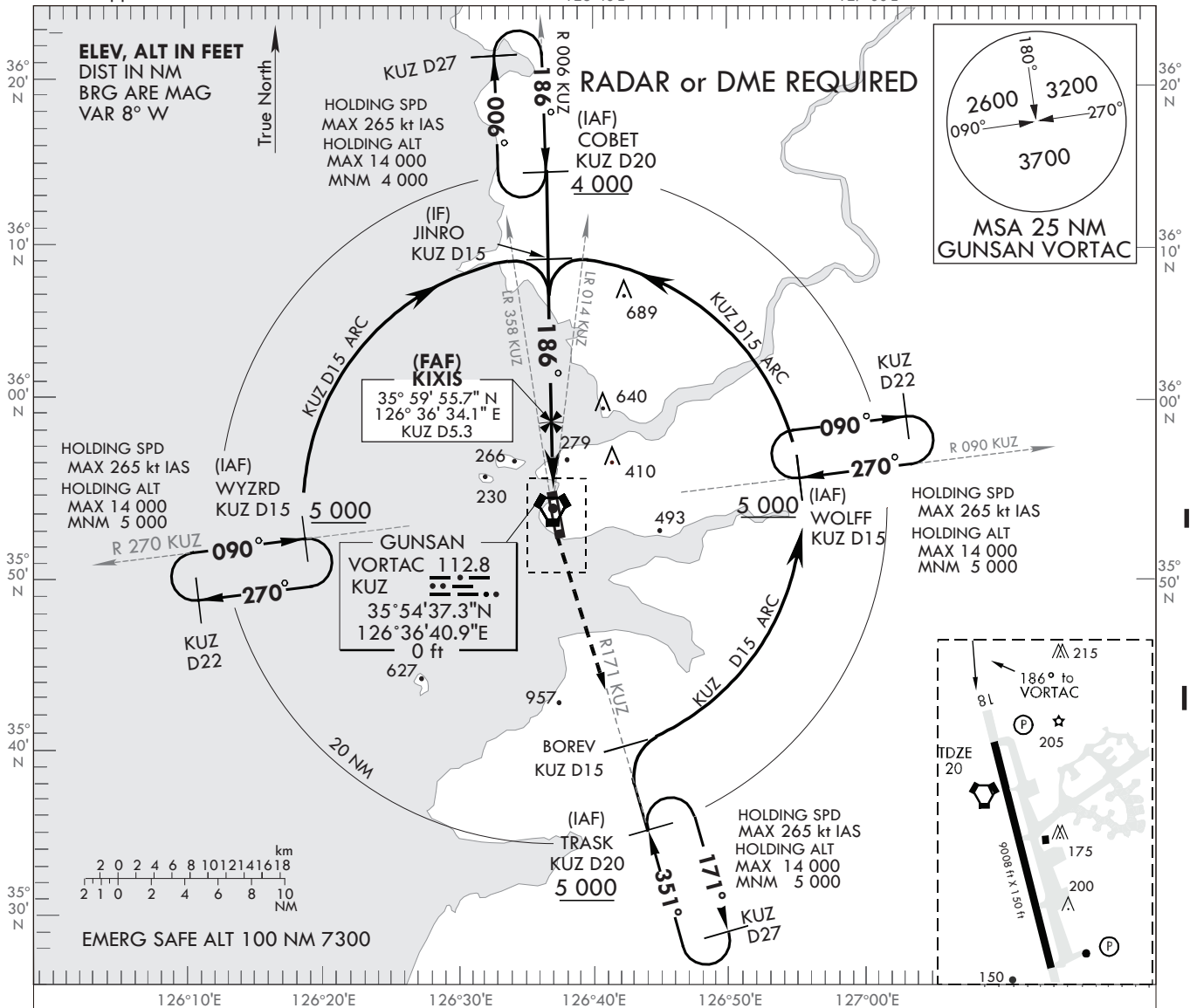
**INSTRUMENT
APPROACH
CHART**

AERODROME ELEV 29 ft
HIGHEST ELEV TDZ 20 ft

APP 124.1 292.65
TWR 126.5 292.3

GUNSAN (RKJK)
TACAN or VOR/DME
RWY 18

Note : Approach and circle-to-land under U.S. TERPS.



MISSED APPROACH
Intercept the RDL 171 KUZ to TRASK and hold at 5 000 ft.
Continue Climb-in-Holding to 5 000 ft.

CATEGORY	A	B	C	D
S-18 *	620 / 24 602 (600 - 1/2)		620 - 1 3/8 602 (600 - 1 3/8)	
CIRCLING	640 - 1 611 (700 - 1)	680 - 1 651 (700 - 1)	680 - 1 3/4 651 (700 - 1 3/4)	760 - 2 1/4 731 (800 - 2 1/4)

* When ALS INOP, increase CAT AB RVR to 55 VIS to 1 mile, CAT CD VIS to 1 3/4 mile.

Change : Information of OBST HGT.

GUNSAN (RKJK)
 TACAN or VOR / DME
 RWY 18

AERONAUTICAL DATA TABULATION

TACAN or VOR/DME approach to RWY 18 from COBET, WOLFF, TRASK, WYZRD	
Fix/point	Coordinates
TRASK (IAF)	35°35'21.9"N 126 °43'26.5"E
BOREV	35°40'10.8"N 126 °41'45.4"E
WOLFF (IAF)	35°56'25.7"N 126 °55'01.0"E
WYZRD (IAF)	35°52'46.1"N 126 °18'21.7"E
COBET (IAF)	36°14'38.8"N 126 °36'15.0"E
JINRO (IF)	36°09'38.5"N 126 °36'21.5"E
KIXIS (FAF)	35°59'55.7"N 126 °36'34.1"E
KUZ 2.1D	-
RETAG	35°55'25.4"N 126 °36'39.9"E
THR RWY 18	35°54'57.21"N 126 °36'46.83"E

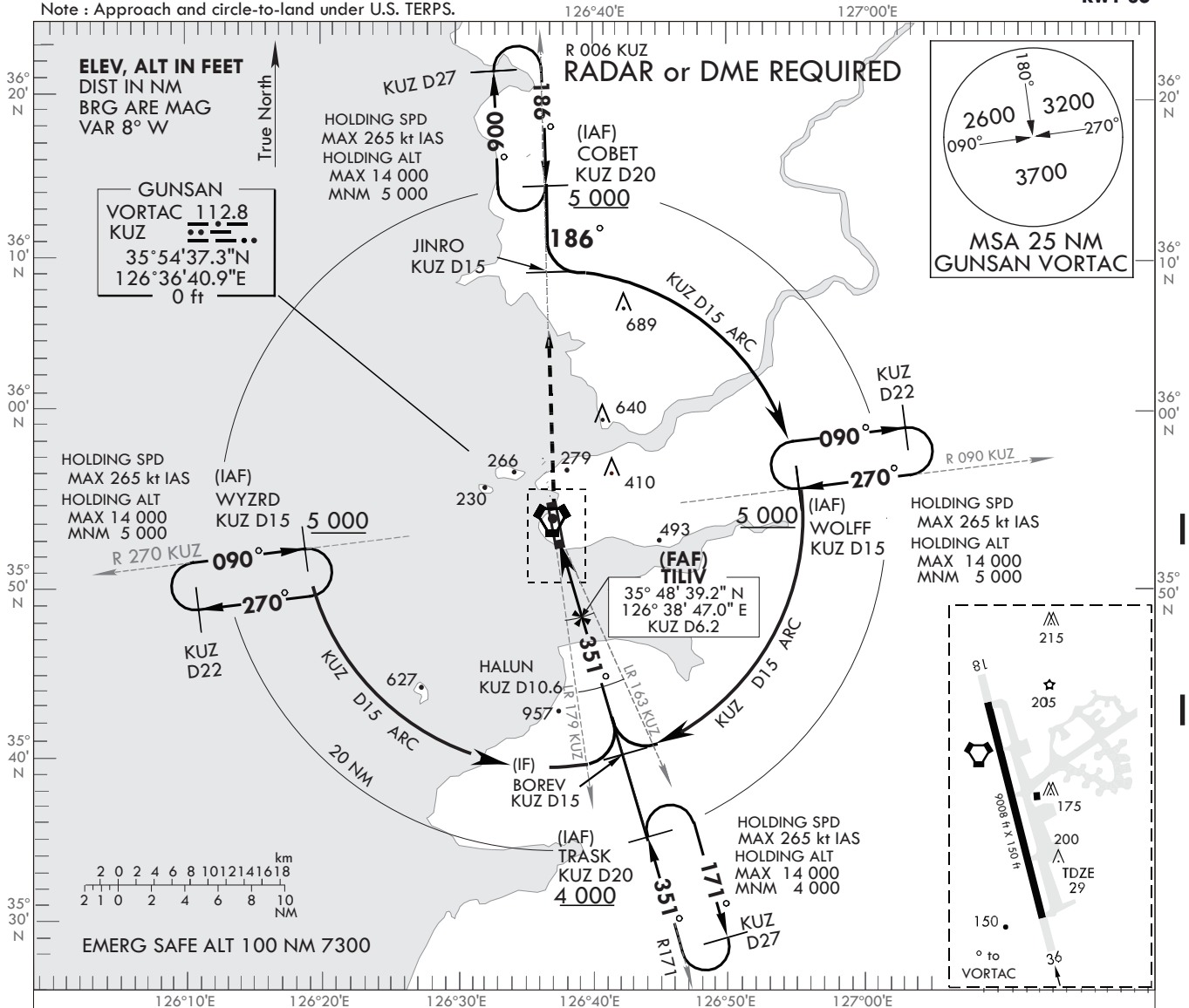
INSTRUMENT APPROACH CHART

AERODROME ELEV 29 ft
HIGHEST ELEV TDZ 29 ft

APP 124.1 292.65
 TWR 126.5 292.3

GUNSAN (RKJK)
TACAN or VOR/DME
RWY 36

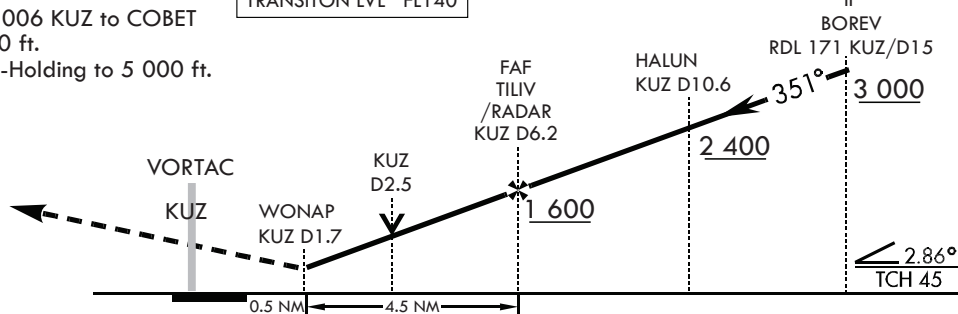
Note : Approach and circle-to-land under U.S. TERPS.



MISSED APPROACH

Intercept the RDL 006 KUZ to COBET and hold at 5 000 ft.
 Continue Climb-in-Holding to 5 000 ft.

TRANSITON ALT 14 000
 TRANSITON LVL FL140



CATEGORY	A	B	C	D
S-36 *	500 / 24 471 (500 - 1/2)		500 / 50 471 (500 - 1)	
CIRCLING	640 - 1 611 (700 - 1)	680 - 1 651 (700 - 1)	680 - 1 3/4 651 (700 - 1 3/4)	760 - 2 1/4 731 (800 - 2 1/4)

* When ALS INOP, Increase CAT AB RVR to 55 VIS to 1 mile, CAT CD VIS to 1 3/8 miles.

Change : Information of OBST HGT.

GUNSAN (RKJK)
 TACAN or VOR / DME
 RWY 36

AERONAUTICAL DATA TABULATION

TACAN or VOR/DME approach to RWY 36 from COBET, WOLFF, TRASK, WYZRD	
Fix/point	Coordinates
COBET (IAF)	36°14'38.8"N 126°36'15.0"E
JINRO	36°09'38.5"N 126°36'21.5"E
WOLFF (IAF)	35°56'25.7"N 126°55'01.0"E
WYZRD (IAF)	35°52'46.1"N 126°18'21.7"E
TRASK (IAF)	35°35'21.9"N 126°43'26.5"E
BOREV (IF)	35°40'10.8"N 126°41'45.4"E
HALUN	35°44'25.0"N 126°40'16.3"E
TILIV (FAF)	35°48'39.2"N 126°38'47.0"E
KUZ 2.3D	-
WONAP	35°52'59.1"N 126°37'15.5"E
THR RWY 36	35°53'29.83"N 126°37'07.61"E